

etherstuff

CONNECTING ETHERNET DEVICES

Ethermometer

Networked Temperature Monitor
with web server and email alarms.

The Etherstuff Ethermometer graphs temperature on a built-in web server AND emails you temperature data. Now also includes two external closure alarms!

Ethermometer by Etherstuff is the solution for monitoring ambient or spot temperatures in rack rooms, equipment rooms, at transmitter or remote equipment sites, wherever you need to monitor and report temperature!

Monitors and reports temperatures and closure status using built-in web server.

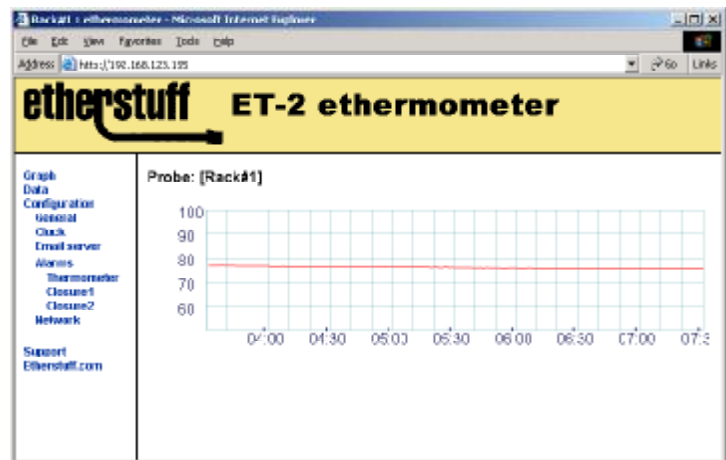
- Ø Intuitive temperature vs. time graphs
- Ø Clear and easy to read temperature trending for sensitive locations.
- Ø Monitor status of two external closures



Configurable email server sends alerts for external closures and out of tolerance temperatures.

- Ø Program alarm thresholds for emailed temperature alerts.
- Ø Configurable closure alarms can be set up for normally open or normally closed circuits.
- Ø Separate email destinations for temperature and closure alerts.

Setting up the Ethermometer is simple and quick. Plug in sensor, LAN connection, and power, then configure the Ethermometer IP address with the Etherset utility. Browse to the Ethermometer's temperature graph. Click on the built-in configuration webpage to set up email, temperature alarms, closure alarms, and graphing options.



List Price only \$249
Order Today !

Ethermometer Model ET-2



Tested To Comply
With FCC Standards

FOR HOME OR OFFICE USE

Etherstuff - 22 Sisterdale Rd - Boerne, TX 78006

www.etherstuff.com